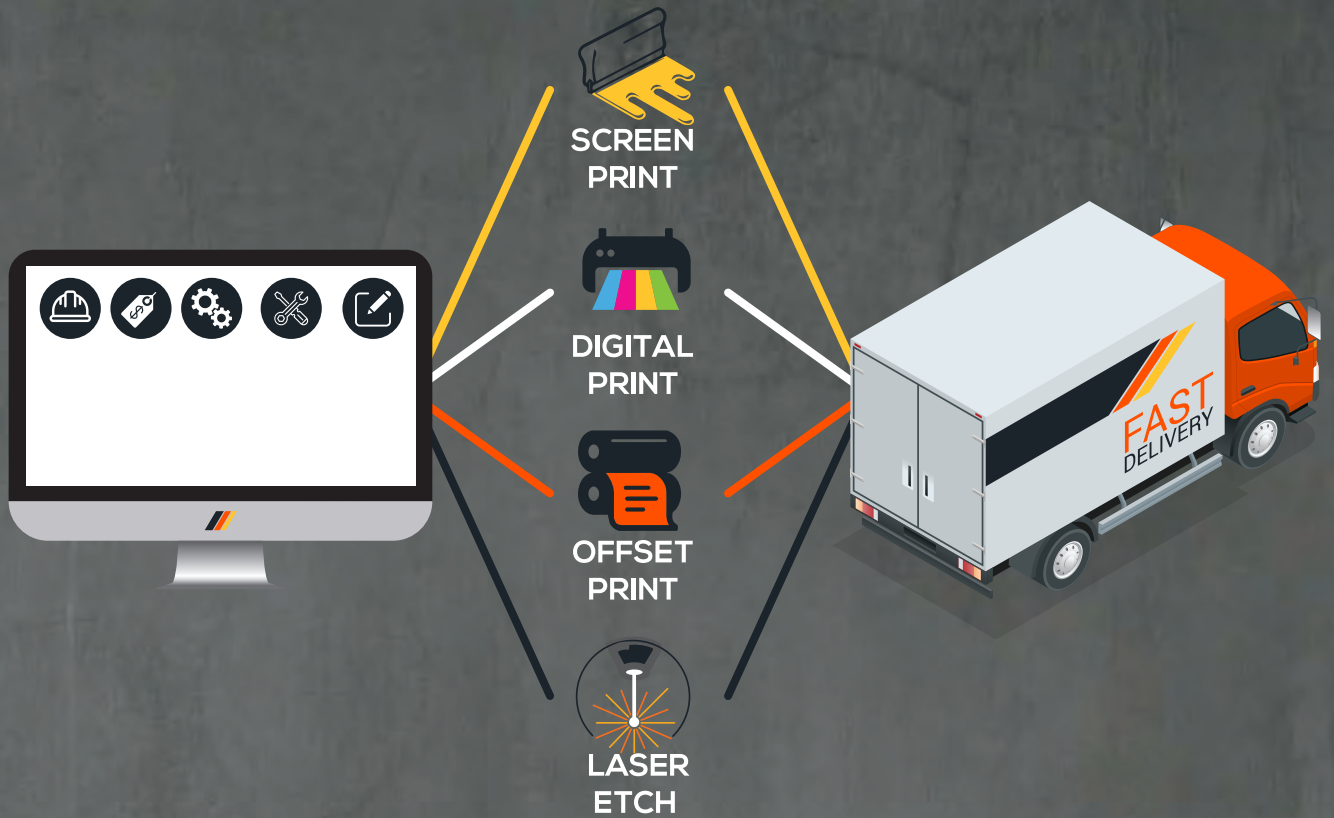


EQUIPMENT IDENTIFICATION PRODUCTS



 **SIGNPRINT**



PRINT MANAGEMENT SYSTEM

Benefits to your company

OPERATIONS



SAVING TIME IN OPERATIONS

Control time - save time by streamlining and centralising your print ordering process via your web-to-print portal.

Customised content - allow remote locations, field reps, or franchisees to personalise marketing collateral to match their specific audience or location information.

PROCUREMENT



INCREASED CASH FLOW BY STOCK CONTROL

Stock Control - print on demand to help cashflow - print only what you need and receive bulk savings by sourcing it from the same printer.

High quality and durability - manufactured to withstand the harsh conditions we experience across Australia.

MARKETING



BRAND CONSISTENCY

Brand consistency – set and control amendments to your branding rules and make any changes in one place.

Inventory control – keep track of stored materials and reprint as needed.

TABLE OF CONTENTS

CALL SIGNS	5
NAMEPLATES	9
TAGS	11
ARMOUR LABEL	12
SIGNS	13
TAPES	15
COMMUNICATION BOARDS	18
APPLICATION TOOLS	19

Writable Embossable Stickers

PART NO:	SPECIFICATIONS
10000	Multicolour print embossable material
FEATURES	
<ul style="list-style-type: none"> • Custom Artwork • Custom Shape Options • Embosses when written on with a ballpoint pen 	



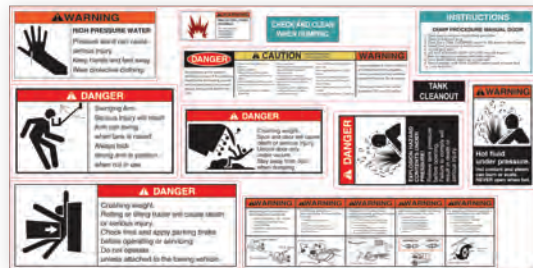
Branding, Service and Safety Decals

PART NO:	SPECIFICATIONS
10100	Multicolour print on gloss white UV outdoor vinyl
FEATURES	
<ul style="list-style-type: none"> • Custom Artwork • Adhesive options for sticking to different surfaces • Custom shape options • Available in 1-2, 2-3, 5-7, 7-10 year durability packages 	



Plant and Equipment Safety Sticker Kits

PART NO:	SPECIFICATIONS
10200	Multicolour print on gloss white UV outdoor vinyl
FEATURES	
<ul style="list-style-type: none"> • Custom Artwork • Adhesive options for sticking to different surfaces • Custom shape options • Available in 1-2, 2-3, 5-7, 7-10 year durability packages 	



Adhesive Control Panel and Nameplates

PART NO:	SPECIFICATIONS
10300	Multicolour print on polycarbonate
FEATURES	
<ul style="list-style-type: none"> • Superior 3M Adhesive • Solvent resistant • Scratch resistant 	



CALL SIGNS

CALL SIGNS



NON REFLECTIVE



Non-Reflective Yellow Call Sign Decals

PART NO:	SPECIFICATIONS
10400	600x330mm
10401	530x230mm
10402	340x150mm
10403	400x200mm

FEATURES	
	<ul style="list-style-type: none"> Available with either black text or black background Custom number/letter range High strength adhesive

NON REFLECTIVE



Non-Reflective White Call Sign Decals

PART NO:	SPECIFICATIONS
10500	600x330mm
10501	530x230mm
10502	340x150mm
10503	400x200mm

FEATURES	
	<ul style="list-style-type: none"> Available with either black text or black background Custom number/letter range High strength adhesive

signprint.com.au 1300 627 548

Class 1 Fluro Yellow Reflective Call Sign Decals

PART NO:	SPECIFICATIONS
10600	600x330mm
10601	530x230mm
10602	340x150mm
10603	400x200mm

FEATURES	DESCRIPTION
	<ul style="list-style-type: none"> • Available with either black text or black background • Custom number/letter range • High strength adhesive

**CLASS 1
REFLECTIVE**



Class 1 White Reflective Call Sign Decals

PART NO:	SPECIFICATIONS
10700	600x330mm
10701	530x230mm
10702	340x150mm
10703	400x200mm

FEATURES	DESCRIPTION
	<ul style="list-style-type: none"> • Available with either black text or black background • Custom number/letter range • High strength adhesive

**CLASS 1
REFLECTIVE**



Class 2 Yellow Reflective Call Sign Decals

PART NO:	SPECIFICATIONS
10800	600x330mm
10801	530x230mm
10802	340x150mm
10803	400x200mm

FEATURES	DESCRIPTION
	<ul style="list-style-type: none"> • Available with either black text or black background • Custom number/letter range • High strength adhesive

**CLASS 2
REFLECTIVE**

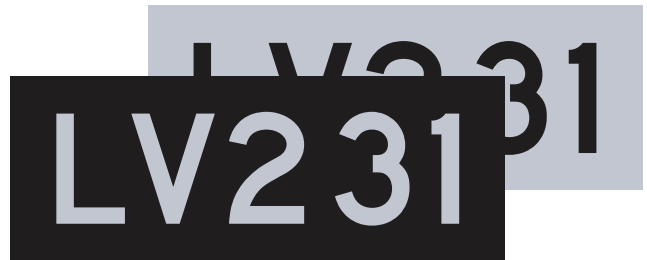


Class 2 White Reflective Call Sign Decals

PART NO:	SPECIFICATIONS
10900	600x330mm
10901	530x230mm
10902	340x150mm
10903	400x200mm

FEATURES	DESCRIPTION
	<ul style="list-style-type: none"> • Available with either black text or black background • Custom number/letter range • High strength adhesive

**CLASS 2
REFLECTIVE**





Call Sign Letters

PART NO:	SPECIFICATIONS
11000	Sheet of 0-9xx high numbers
11001	Sheet of custom mm high letters

FEATURES	
	<ul style="list-style-type: none"> Available with either black text or black background. Available in yellow or white. Available in class 1, class 2 or non reflective. Custom number/letter range. High strength adhesive.

MAGNETIC CALL SIGNS

NON REFLECTIVE



Non-Reflective Yellow Call Sign Magnets

PART NO:	SPECIFICATIONS
11100	600x330mm
11101	530x230mm
11102	340x150mm
11103	400x200mm

FEATURES	
	<ul style="list-style-type: none"> Available with either black text or black background Custom number/letter range Strong magnetic backing

NON REFLECTIVE



Non-Reflective White Call Sign Magnets

PART NO:	SPECIFICATIONS
11200	600x330mm
11201	530x230mm
11202	340x150mm
11203	400x200mm

FEATURES	
	<ul style="list-style-type: none"> Available with either black text or black background Custom number/letter range Strong magnetic backing

Class 1 Fluro Yellow Reflective Call Sign Magnets

PART NO:	SPECIFICATIONS
11300	600x330mm
11301	530x230mm
11302	340x150mm
11303	400x200mm

FEATURES	<ul style="list-style-type: none"> • Available with either black text or black background • Custom number/letter range • Strong magnetic backing
-----------------	---

CLASS 1 REFLECTIVE



Class 1 White Reflective Call Sign Magnets

PART NO:	SPECIFICATIONS
11400	600x330mm
11401	530x230mm
11402	340x150mm
11403	400x200mm

FEATURES	<ul style="list-style-type: none"> • Available with either black text or black background • Custom number/letter range • Strong magnetic backing
-----------------	---

CLASS 1 REFLECTIVE



Class 2 Yellow Reflective Call Sign Magnets

PART NO:	SPECIFICATIONS
11500	600x330mm
11501	530x230mm
11502	340x150mm
11503	400x200mm

FEATURES	<ul style="list-style-type: none"> • Available with either black text or black background • Custom number/letter range • Strong magnetic backing
-----------------	---

CLASS 2 REFLECTIVE



Class 2 White Reflective Call Sign Magnets

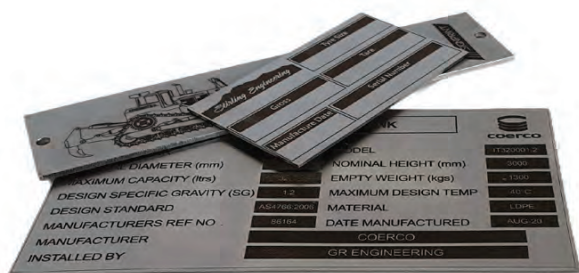
PART NO:	SPECIFICATIONS
11600	600x330mm
11601	530x230mm
11602	340x150mm
11603	400x200mm

FEATURES	<ul style="list-style-type: none"> • Available with either black text or black background • Custom number/letter range • Strong magnetic backing
-----------------	---

CLASS 2 REFLECTIVE



NAMEPLATES



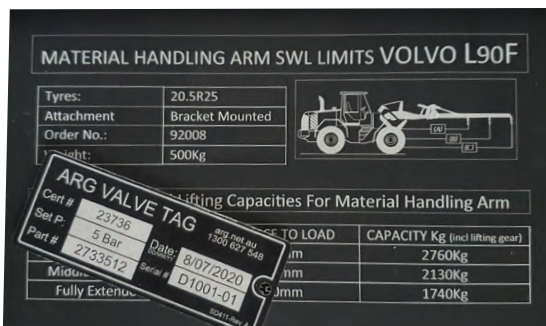
Stainless Steel Laser Etched Plates

PART NO:	SPECIFICATIONS
----------	----------------

20000	40x100mm
20001	50x200mm
20002	150x150mm
20003	Custom size available

FEATURES

- Permanent marking etched into the surface of the metal
- 1.2mm thickness (other thickness available on request)
- Holes or adhesive back available on request



Aluminium Laser Etched Plates

PART NO:	SPECIFICATIONS
----------	----------------

20100	40x100mm
20101	50x200mm
20102	150x150mm
20103	Custom size available

FEATURES

- Black aluminium with marking etched into the surface of the metal
- 1.0mm thickness (other thickness available on request)
- Holes or adhesive back available on request



Laser Cutout Plates

PART NO:	SPECIFICATIONS
----------	----------------

20200	Custom size available
-------	-----------------------

FEATURES

- Design cut from Stainless Steel, Aluminium or Mild Steel.

Stainless Steel Paint Filled Plates	
PART NO:	SPECIFICATIONS
20300	Custom size available
FEATURES	<ul style="list-style-type: none"> • Deep surface etching with durable paint fill • 2.0mm thickness (other thickness available on request) • Holes or adhesive back available on request



Printed Plates	
PART NO:	SPECIFICATIONS
20400	Custom size available
FEATURES	<ul style="list-style-type: none"> • Printed aluminium plates • 1.0mm thickness (other thickness available on request) • Holes or adhesive back available on request



Anodic Screen Printed Plates	
PART NO:	SPECIFICATIONS
20500	Custom size available
FEATURES	<ul style="list-style-type: none"> • Ink impregnated durable scratch resistant surface • 1.0mm thickness (other thickness available on request) • Holes or adhesive back available on request



Traffolyte Nameplates	
PART NO:	SPECIFICATIONS
20600	Multi-layered plastic for engraving
FEATURES	<ul style="list-style-type: none"> • Permanent marking • Non-conductive for use in electrical cabinets/switchboards



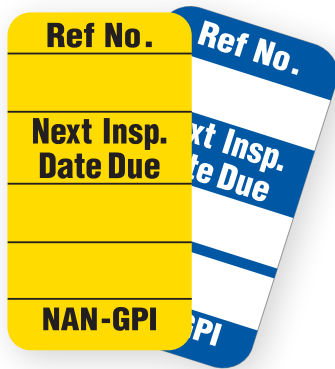
Anti-tear Safety Tags

PART NO:	SPECIFICATIONS
----------	----------------

30000	Danger do not operate
30001	Out of service
30002	Information tag

FEATURES

- Anti tear technology
- Eyelet and string



Rigid PVC Safety Tags

PART NO:	SPECIFICATIONS
----------	----------------

30100	Custom size available
-------	-----------------------

FEATURES

- Custom artwork
- Custom shape options
- UV resistant



Lean/5S Visual Tags

PART NO:	SPECIFICATIONS
----------	----------------

30200	Customised tags for lean projects
-------	-----------------------------------

FEATURES

- Anti tear technology
- Eyelet and string



Hose/Cord Safety Tags

PART NO:	SPECIFICATIONS
----------	----------------

30300	HDPE rigid tag
-------	----------------

FEATURES

- Available in orange or yellow
- Houses and protects the asset sticker
- Secured to cord/hose with zip ties

INTRODUCING THE NEW



<i>Armour Label</i>		
PART NO:	SPECIFICATIONS	
10400	Multicolour print with anti-scuff surface	
FEATURES	<ul style="list-style-type: none"> • Custom artwork • Extra strong adhesive • Custom shape options • High-pressure spray tolerant • Thick scratch-resistant armour surface 	



Composite Metal Signs

PART NO:	SPECIFICATIONS
40000	Aluminium composite sheet 3mm or 5mm thick

- FEATURES**
- Printed with solid or reflective surface
 - Custom size



Aluminium Signs

PART NO:	SPECIFICATIONS
40100	Aluminium sheet 2mm thick

- FEATURES**
- Printed with solid or reflective surface
 - Custom size

Magnetic Signs	
PART NO:	SPECIFICATIONS
40200	Magnetic material 0.6, 0.7 or 0.9mm
FEATURES	<ul style="list-style-type: none"> Printed with solid or reflective surface Custom size



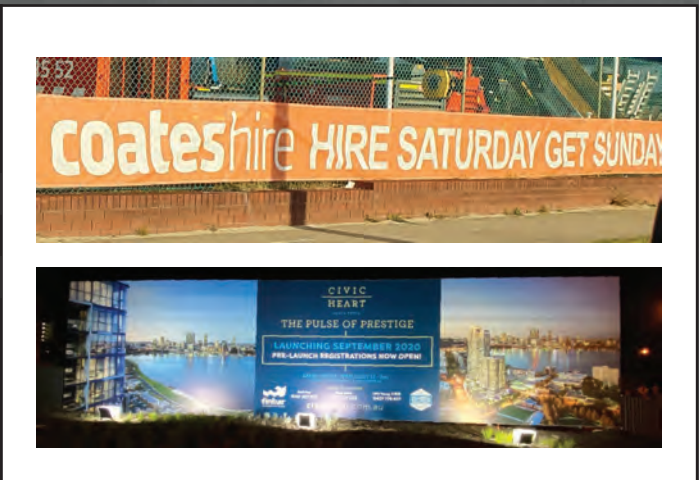
Poly Signs	
PART NO:	SPECIFICATIONS
40300	Polypropelene sheet 0.8 or 1.4mm
FEATURES	<ul style="list-style-type: none"> Full colour print Custom size UV stable



Corflute Signs	
PART NO:	SPECIFICATIONS
40400	Corflute sheet 3mm or 5mm
FEATURES	<ul style="list-style-type: none"> Full colour print Custom size



Banner Signage	
PART NO:	SPECIFICATIONS
40500	Fence banner mesh
40501	Display banner
FEATURES	<ul style="list-style-type: none"> Full colour print Custom size





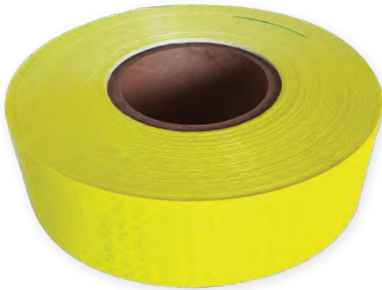
Black Anti-Slip Tape

PART NO:	SPECIFICATIONS
----------	----------------

50000	100mm x 20m

FEATURES

- Reduce the risk of slipping
- Course surface to ensure grip in wet conditions
- Adheres to most surfaces
- Suitable for indoor and outdoor situations



Class 1X Reflective Tape

PART NO:	SPECIFICATIONS
----------	----------------

50100	Fluro yellow 50mm x 47.5m

FEATURES

- Mining grade reflective designed for increased road safety for vehicles and objects
- High performance at both day-time and night-time
- Visible from any angle



Class 1X Reflective Tape

PART NO:	SPECIFICATIONS
----------	----------------

50200	Fluro yellow 75mm x 47.5m

FEATURES

- Mining grade reflective designed for increased road safety for vehicles and objects
- High performance at both day-time and night-time
- Visible from any angle

Class 1X Reflective Tape	
PART NO:	SPECIFICATIONS
50300	Deep yellow 50mm x 47.5m
FEATURES	<ul style="list-style-type: none"> • Mining grade reflective designed for increased road safety for vehicles and objects • High performance at both day-time and night-time • Visible from any angle



Class 1X Reflective Tape	
PART NO:	SPECIFICATIONS
50400	Orange 50mm x 47.5m
FEATURES	<ul style="list-style-type: none"> • Mining grade reflective designed for increased road safety for vehicles and objects • High performance at both day-time and night-time • Visible from any angle



Class 1X Reflective Tape	
PART NO:	SPECIFICATIONS
50500	White 50mm x 47.5m
FEATURES	<ul style="list-style-type: none"> • Mining grade reflective designed for increased road safety for vehicles and objects • High performance at both day-time and night-time • Visible from any angle



Class 2 Striped Reflective Tape	
PART NO:	SPECIFICATIONS
50700	Red/yellow 50mm x 47.5mm
FEATURES	





Class 2 Striped Reflective Tape

PART NO:	SPECIFICATIONS
50800	Red/yellow 75mm x 47.5m

FEATURES	
	<ul style="list-style-type: none"> Reflective used to mark hazards, equipment and designated areas



Yellow tape

PART NO:	SPECIFICATIONS
50900	Solid yellow 50mm x 32.9m

FEATURES	
	<ul style="list-style-type: none"> Durable yellow tape for equipment marking or floor marking



Striped Tape

PART NO:	SPECIFICATIONS
51000	Black/yellow 50mm x 32.9m

FEATURES	
	<ul style="list-style-type: none"> Durable striped tape for equipment marking or floor marking



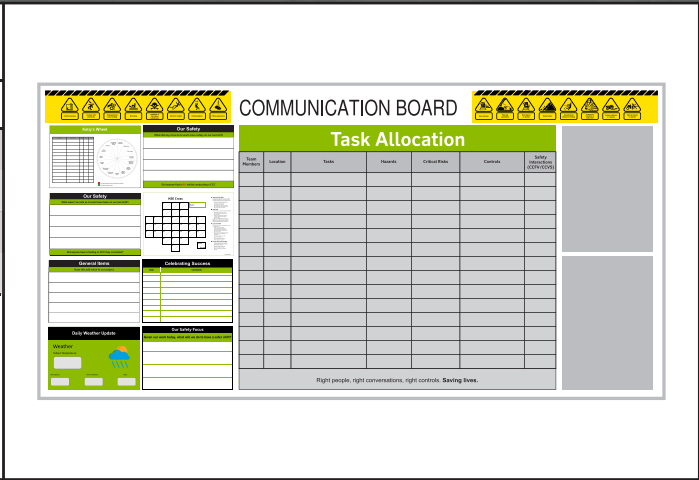
Cloth Tape

PART NO:	SPECIFICATIONS
51100	Black 48mm x 25m

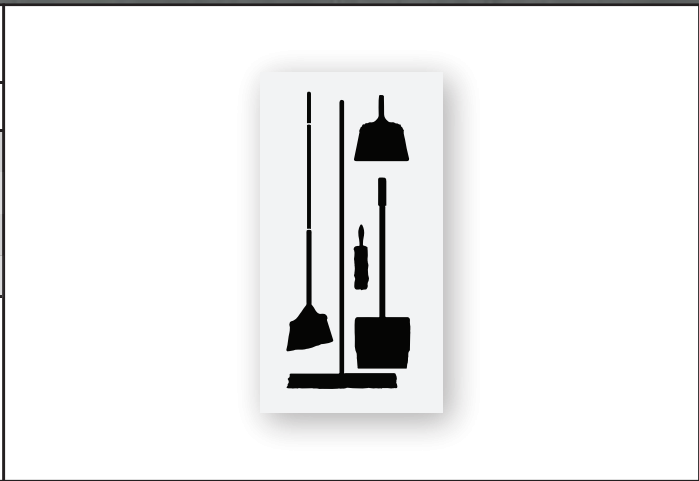
FEATURES	
	<ul style="list-style-type: none"> High quality waterproof tape, hand tearable for easy use

COMMUNICATION BOARDS

<i>Communication Boards</i>	
PART NO:	SPECIFICATIONS
70000	1200 x1200
	1200 x1500
	1200 x1800
FEATURES	<ul style="list-style-type: none"> • Magnetic board with custom printing and branding • Whiteboard functionality



<i>Shadow Boards</i>	
PART NO:	SPECIFICATIONS
70100	1200 x1200
	1200 x1500
	1200 x1800
FEATURES	<ul style="list-style-type: none"> • Timber board with vinyl print for organising workspaces • Provide photos of your tools on the SignPrint scale document for perfect shadows



<i>Whiteboard Magnets</i>	
PART NO:	SPECIFICATIONS
70200	Custom Sizing
FEATURES	<ul style="list-style-type: none"> • Custom printed and shaped magnets for visual communication boards



APPLICATION & REMOVAL TOOLS



Ritetack

PART NO:	SPECIFICATIONS
----------	----------------

80000	Multi purpose construction adhesive that performs quickly with extreme strength.
-------	--

FEATURES

- Exhibits a superior initial grab
- Suits virtually all building materials such as timber, ACM sheet, metal and glass
- Paintable



Easyapp Vinyl Application Fluid

PART NO:	SPECIFICATIONS
----------	----------------

80100	Fast Vinyl Application Fluid
-------	------------------------------

FEATURES

- Eliminate bubbles and wrinkles
- Quick dry time and Super dry time
- Super safe on solid surfaces with Special formula
- Available in 750mL trigger pack or 5L bulk tub
- EasyApp is the premium solution for all vinyl and tint applications.

Easyprep Surface Cleaner

PART NO:

SPECIFICATIONS

80200 Ideal as preparation for graphic application

FEATURES

- A streak free all in one surface cleaner, for all general surfaces.
- Completely safe on all wettable surfaces. Rapidly and effectively dislodges dirt, dust and grime on hard surfaces with the minimum amount of effort..



Application Squeegee

PART NO:

SPECIFICATIONS

80300 Graphic application squeegee

FEATURES

- No scratches, no marks, just smooth motions that easily glides across vinyl films, paint protected films



Decal Remover Blade Holder

PART NO:

SPECIFICATIONS

80400 Blade holder supplied with 1 orange plastic blade.

FEATURES

- The ideal blade holder for the plastic scraper blades.
- Perfect for removing stickers, vinyls and decals without damaging the surface below.



Decal Remover Blade

PART NO:

SPECIFICATIONS

80500 Double-edged plastic blades that fit most standard razor blade holders.

FEATURES

- Great for removing pressure sensitive materials from metal, plastic, & glass surface that are easily scratched.



Please photocopy form for future use

Fax: 1300 462 754

1. Your Order

Invoice to:	_____
_____	_____
_____	_____
Order Date:	_____
Order Number:	_____
Contact:	_____
Contact Name:	_____

Deliver to:	_____	
Deliver to:	_____	
Suburb:	_____	
State:	Postcode:	Mel Ref:
Site Contact:	Mobile:	
Delivery Date Required:	am/pm	
Special Details:	_____	

2. Order Details

Qty	Product Code	Description	Size	Unit Price ex GST	Total ex GST
			x	\$	
			x	\$	\$
			x	\$	\$
			x	\$	\$
			x	\$	\$
			x	\$	\$
			x	\$	\$
			x	\$	\$
			x	\$	\$
			x	\$	\$
			x	\$	\$
			x	\$	\$
			x	\$	\$
			x	\$	\$
			x	\$	\$
			x	\$	\$

*All prices FOB (Please phone for freight costs or advice us of your nominated freight company)

Subject to Mark-it Ltd Pty Standard Terms & Conditions. Copy available on request.

I require a confirmation of relevant cost prior to order/delivery.

3. Payment Details

Cheque enclosed
 I wish to apply for a 30 day credit account
 I wish to pay by EFT - advise me of Mark-it's bank account details

Please charge my Credit Card Visa Mastercard Bankcard

Total	\$
+Freight charges	
+10% GST	
Total (Incl. GST)	

Minimum order \$50

Card Number Expiry Date

Card holder's name

Signature

I hereby agree to Mark-it terms & conditions of sale. - copy available on request

Date _____
 Orderers Full Name _____
 Orderers Position _____
 Signature _____

4. Send Your Order

E: sales@signprintaustralia.com.au F:1300 462 754 P: 1300 627 548 Post: PO Box 282 Canning WA 6987 Online: www.signprint.com.au





32 Hogarth St,
Cannington 6107
Western Australia

Mon-Fri
7am-5pm

Phone 1300 627 548 • Email sales@signprintaustralia.com.au • ABN 21 621 533 051

www.signprint.com.au